



## 1992-2000 Honda Civic QuickLIFT Kit

### Step 1 - Unpack QuickLIFT kit and verify contents.

Remove all items from the packing tube. You should have the following before beginning:

- \* (2) Gas Charged Springs
- \* (4) 3/16" Steel Rivets (for hood bracket) &
- \* (4) 3/16" longer Steel Rivets (for lower bracket)
- \* (4) Fender & Hood Steel brackets
- \* Printed Instructions



Longer Rivets

Standard Rivets

- \* Gas Spring locking clips (already on the gas spring ball ends - remove before assembly)

### Step 2 - Gather the required tools.

Please gather the following tools before you begin the installation:

- \* Power Drill
- \* 3/16" drill bits
- \* Fine permanent marker or felt tip pen
- \* Masking tape
- \* Tape Measure
- \* Hammer & center punch
- \* Rivet gun, capable of 3/16" rivets (most brands can handle this size)



Recommended: Craftsman standard or Swivel Riveter (shown - 974749) - \$9.99 to \$17.99

**Note:** Only use the rivets supplied in the QuickLIFT kit.

### Step 3 - Locate Driver's side hood bracket.

A. Holding a bracket in place as shown on the driver's side hood, mark the center of the lower hole using a permanent marker. You may need a friend to hold up the hood higher than the stock prop rod allows to gain access.

B. The ball-stud should face outward or away from vehicle - bottom edge will contact the hood hinge bracket, and the back of the bracket should rest against the hood's understructure as shown to the right.



## Step 4 - Mark the 1st hole.

A. Using a center punch and a hammer, tap the center of the dot you just made (the indentation will help guide the drill bit and keep it from wandering).

Place bracket back in place to be sure it is still centered where it should be before moving to Step 5. Set bracket aside.



## Step 5 - Drill a 3/16" hole.

A. Carefully drill the lower bracket hole as shown to the right using **ONLY a 3/16" drill bit**.

Only use a 3/16" drill bit - the rivet will not work properly with any other size drill bit.

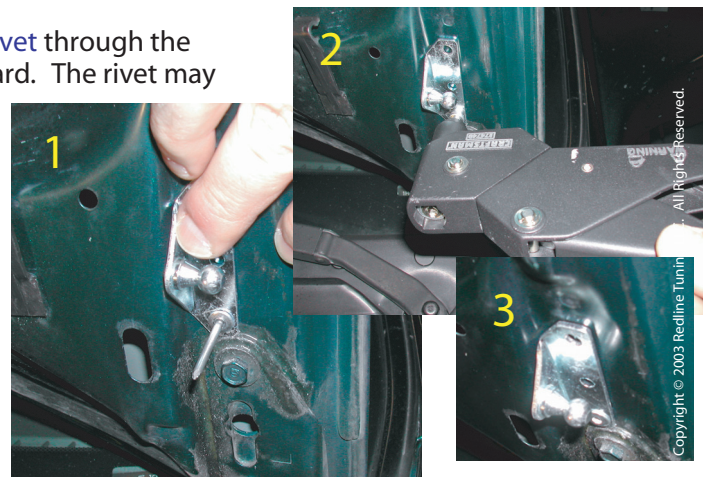
Be **careful** when drilling to NOT drill up through your hood! Once you feel the drill bit pass through the sheet metal, ease up during the final drilling to keep the bit from punching up into the hood skin. Sharp new bits will always work best!



## Step 6 - Rivet bracket to hood (USE SHORT ENDED RIVETS ON HOOD).

A. With the bracket in place, insert a short ended rivet through the bracket and hole with the long stem sticking outward. The rivet may require a few twists while firmly pushing it in. Hold the bracket in place using a piece of tape at the other end of the bracket.

B. Check to be sure your rivet gun has the 3/16" rivet head installed, then slide rivet into gun. While applying force to the rivet and bracket, firmly squeeze riveter handle multiple times until the rivet pops and snaps off the rivet stem. **Be careful when rivet stem snaps off not to scratch paint.**



## Step 7 - Drill 2nd hole in hood bracket and rivet bracket into place.

A. Use center punch to indent center of upper hole before drilling. Carefully drill the second hole leaving the bracket in place and then rivet bracket in place using shorter head rivets.

**Be careful not to drill up through top of the hood. Heed the warnings mentioned earlier.**





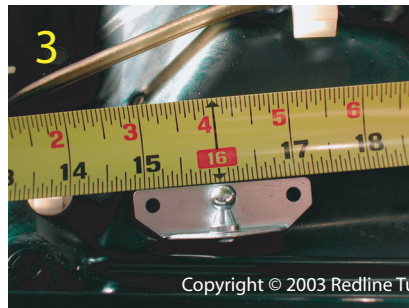
## Step 8 - Repeat steps 3-7 and install the passenger side hood bracket.

A. Your hood has a symmetrical under structure. Repeat Steps 3-7 to install the upper passenger side hood bracket. Take your time and verify the measurements using the bracket you just installed.

## Step 9 - Position and mark first hole for driver's side fender bracket.

A. Hold the bracket in position as shown to the right. The bracket will sit nicely in the area shown - the centerline of the ball-stud should measure to be 16" from the corner of the fender above the headlight. The ball-stud should be pointing toward the engine.

B. Verify measurement and then mark 1st hole using a fine permanent marker.



## Step 10 - Mark hole center before drilling.

A. Using a center punch and a hammer, tap the center of the marked hole. This will help guide the drill bit and keep it from wandering.

## Step 11 - Drill 1st hole using 3/16" drill bit

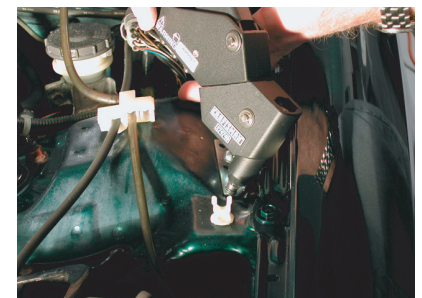
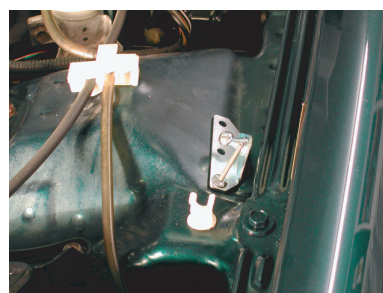
A. Drill the 1st hole at the marked position using a **3/16" drill bit**. Do not ream or over drill the hole - test fit rivet in hole until it makes it all the way in, then remove rivet and put bracket in place.



## Step 12 - Rivet end of the bracket to fender.

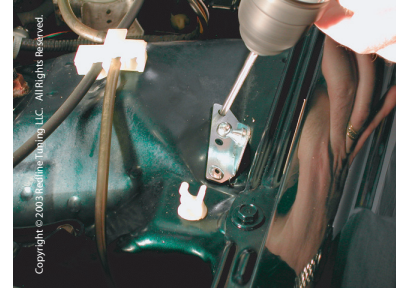
A. With the bracket lined up again, place a rivet through the bracket and hole with the long stem sticking upright. **Be sure to use the long ended rivets for the fender brackets as determined earlier.**

B. Check to be sure your rivet gun has the 3/16" rivet head installed, then slide rivet gun onto rivet. While applying downward force on rivet and bracket, firmly squeeze riveter handle multiple times until rivet gun pops and snaps off the rivet.



### Step 13 - Mark center with marker and indent with center punch. Rivet in place.

- Using a permanent marker, mark the second hole of the fender bracket. **Twist to align bracket if necessary to keep it in the correct position.**
- Using a center punch and hammer, tap the center of the marked hole. This will help guide the drill bit and keep it from wandering.
- Drill the second hole through the bracket hole using a  $3/16$ " drill bit.
- Rivet the bracket in place.

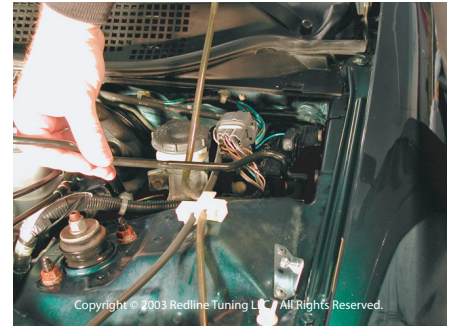


### Step 14 - Repeat steps 9-14 to attach the passenger fender bracket.

- Repeat Steps 9-14 to attach the passenger side fender bracket. The vehicle is symmetrical so the same locators can be used. Feel free to measure off of key areas to ensure a symmetrical installation.

### Step 15 - Remove stock prop rod.

- Have a friend hold the hood up. Remove the stock prop rod assembly at this time.
  - To remove the prop rod, you will have to bend it down as shown. Once in this position, rotate the prop rod while pulling until it slips away from the vehicle. Set aside - you will not need this any longer.
- Optional step:** Crush prop rod. Bend up into a pretzel and feel good that you will never need this again!



### Step 16 - Cycle both gas springs - then install

- CYCLE EACH GAS SPRING BEFORE INSTALLING** - firmly hold a gas spring with both hands by the thick cylindrical end - firmly press down on the floor or carpet and compress the spring. Do this to both springs. Have a friend hold the hood up. Remove the stock prop rod assembly at this time.
- Install the driver's side gas spring with the cylinder at the bottom (large end down). Be sure that the sockets snap securely onto the ball studs. Have friend remain holding the hood up until Step 17 is completed. This procedure is most easily done if the upper ends are snapped on first and attach the lower ends last.

### Step 17 - Install the gas spring locking clips and test installation.

- Insert the gas spring locking clips.
- Remove all tools from engine area. Check that all the steps were followed correctly and that the brackets and gas springs are securely mounted.
- Lower hood slowly and check for clearance issues. Once you are certain that the steps were followed correctly, carefully lower the hood. The springs will take a few repetitive operations to get them working properly - lower and raise the hood a few times to lubricate the struts.

