



## 1989-1994 Nissan 240SX QuickLIFT Installation Guide

### Step 1 - Unpack QuickLIFT system and verify contents.

Remove all items from the packing tube. You should have the following before beginning:

- \* (2) Gas-charged springs (**RT-QL-200-7A**)
- \* (6) #2 multi-grip rivets
- \* (2) Hood Steel brackets
- \* (2 pr) Ball-stud, washer
- \* Printed Instructions

### Step 2 - Gather the required tools.

Please gather the following tools before you begin the installation:

- \* Power Drill
- \* 3/16" or #11 indexed drill bits
- \* 10mm socket and 13mm deep-well socket with wrench
- \* Fine permanent marker or felt tip pen
- \* Tape measure or ruler
- \* Masking tape
- \* Hammer & center punch
- \* Rivet gun, capable of 3/16" rivets

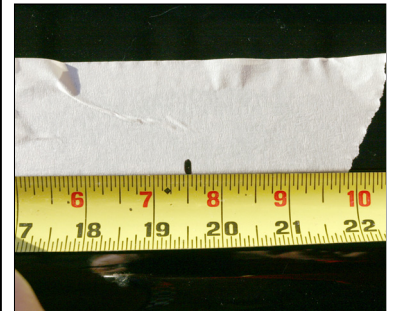


*Recommended: Craftsman standard or Swivel Riveter (shown - 974749) - \$9.99 to \$17.99*

**Note: Only use the rivets supplied in the QuickLIFT system.**

### Step 3 - Mark centerline of hood bracket.

A. Place a 3" piece of masking tape on the edge of the hood as shown below. Run the tape measure along the edge of the hood centering around 19-1/2" from the cutout near headlight.



B. Place a mark at exactly **19-1/2"** on the masking tape headlight corner of the hood as shown. Mark both sides the same way and verify your measurement.



#### Step 4 - Align Driver's side hood bracket and mark 1st hole.

- A. Hold hood bracket such that the ball stud faces out and away from the vehicle and bracket is tucked up over the hood frame as shown to the right.
- B. Using a marker, place a dot at the center of the middle hole once the centerline of the ball stud is lined up with your mark.
- C. Using a center punch and a hammer, tap the center of the dot you just made (this indentation will help guide the drill bit and keep it from wandering. Place bracket back in place to be sure it is still centered where it should be before moving to Step 5.



#### Step 5 - Drill #11 indexed bit hole, or 3/16" hole.

- A. Carefully drill the center bracket hole as shown to the right using a **(#11 indexed bit)** or **(use 3/16" bit if #11 bit is not available)**.

If you do not have a #11 indexed bit, you can use the 3/16" bit, however you may have to test fit the rivet and slightly ream hole until rivet fits tightly through bracket and hole - 3/16" is slight smaller than the #11 bit. Do not use any other drill bit sizes!

**\*\*\* Place a piece of tape around the drill bit 1/4" past the tip! This will help prevent the drill bit from passing through and denting the hood skin!**



#### Step 6 - Rivet center of bracket to hood.

- A. Hold the bracket in position.
- B. With the bracket lined up again, place the multi-grip rivet through the bracket and hole with the long stem sticking outward. The rivet may require a few twists while pushing it in.
- C. Check to be sure your rivet gun has the 3/16" rivet head installed (this is the most common size), then slide rivet gun onto rivet. While applying force to the rivet and bracket, firmly squeeze riveter handle multiple times until rivet gun pops and snaps off the rivet stem. Be careful when rivet stem snaps off.
- D. Drill and rivet the second and third hole in bracket.



### Step 7 - Remove fender bolts - replace with ball-stud/washer

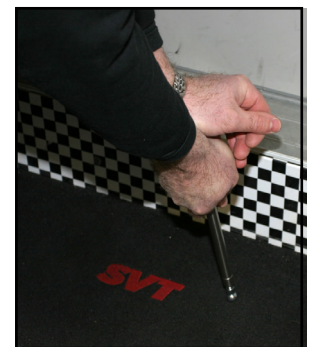
- A. Remove fender bolt as shown using a 10mm socket or wrench.
- B. Using a 1/2" socket drive for the ball-stud, install the ball-stud/washers securely to the fender.
- C. Repeat for passenger side.



### Step 8 - Cycle gas springs a few times

- A. **CYCLE EACH GAS SPRING BEFORE INSTALLING - firmly hold a gas spring with both hands by the thick cylindrical end - firmly press down on the floor or carpet and compress the spring. Compress both springs.** Have a friend hold the hood up.

Compress each gas spring a few times - Note: If you unable to compress the gas springs, do not worry. Normal function after installation will also serve the same purpose.



### Step 9 - Install gas springs onto fender ball-studs

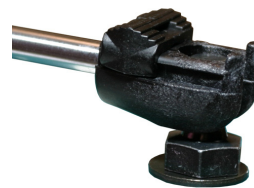
- A. Firmly press the open end of the socket onto the ball-stud.
  - B. Lower gas spring down such that the LOCKING MECHANISM IS ON TOP - aiming toward windshield.
  - C. Slide the locking mechanism over the ball-stud to secure the gas spring. Be sure that the locking clip slides all the way over the ball-stud - this will ensure that this end of the gas spring will not free itself.
- If you lose the sliding lock or damage one - replacements can be ordered here:  
<http://www.redlinetuning.com/QL-parts.html>



\* SLIDING LOCK MUST BE ON TOP WHEN HOOD IS LOWERED



A. Snap on socket



B. Lower gas spring



C. Slide clip over ball-stud to lock end-fitting

### Step 10 - Snap gas springs onto hood brackets

